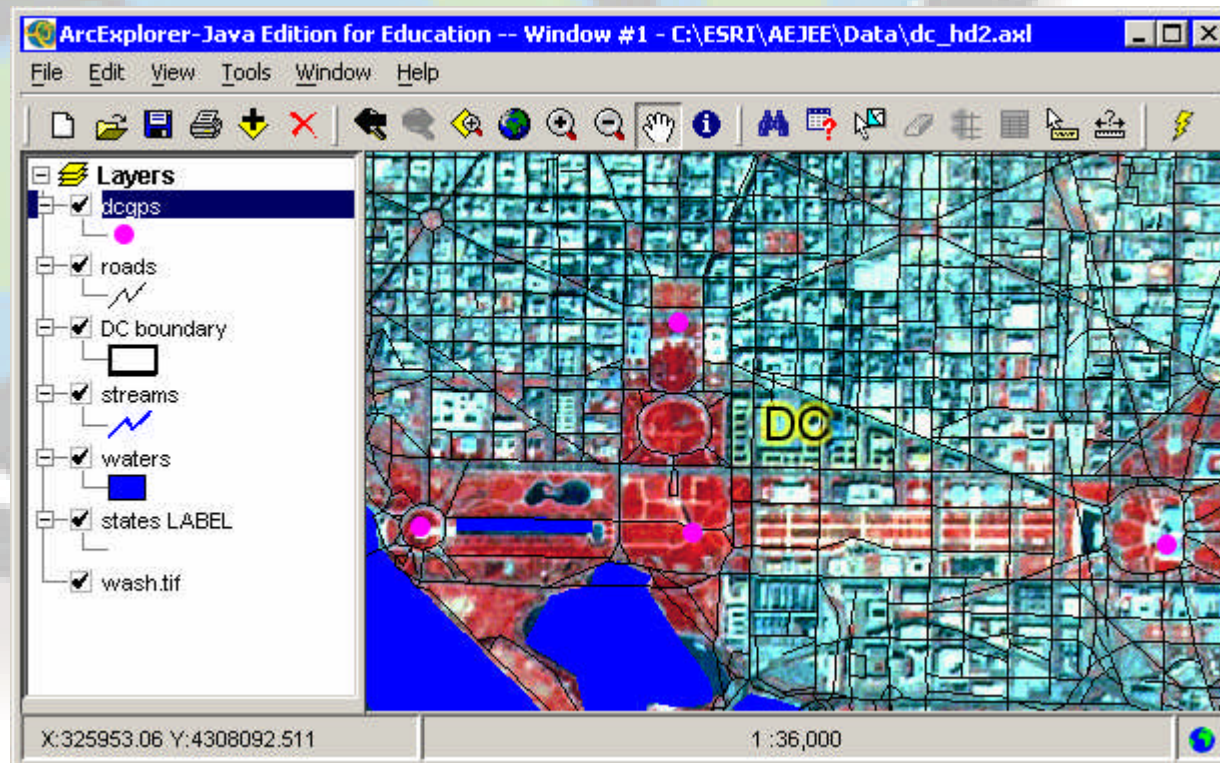


ArcExplorer™

Java™ Edition for Education

(“AEJEE”)



Windows & Mac OSX

(AEJEE ver. 2.3 uses Java 1.5)

- **Lightweight, easy interface**
- **Can use data live over the Internet from ArcIMS servers**
- **Downloadable**
- **Distributable**
- **Built-in data, projects, tutorial**
- **Free (kids can use at home!)**
- **Skills transfer to full GIS tools**

Key Capacities of AEJEE

- **Create, save, share projects**
- **Display shapefiles & images**
- **Pan/zoom, identify, measure**
- **Find, select, query, buffer**
- **Classify, symbolize**
- **Add XY (GPS) points with data**
- **Hotlinks**
- **Layouts**



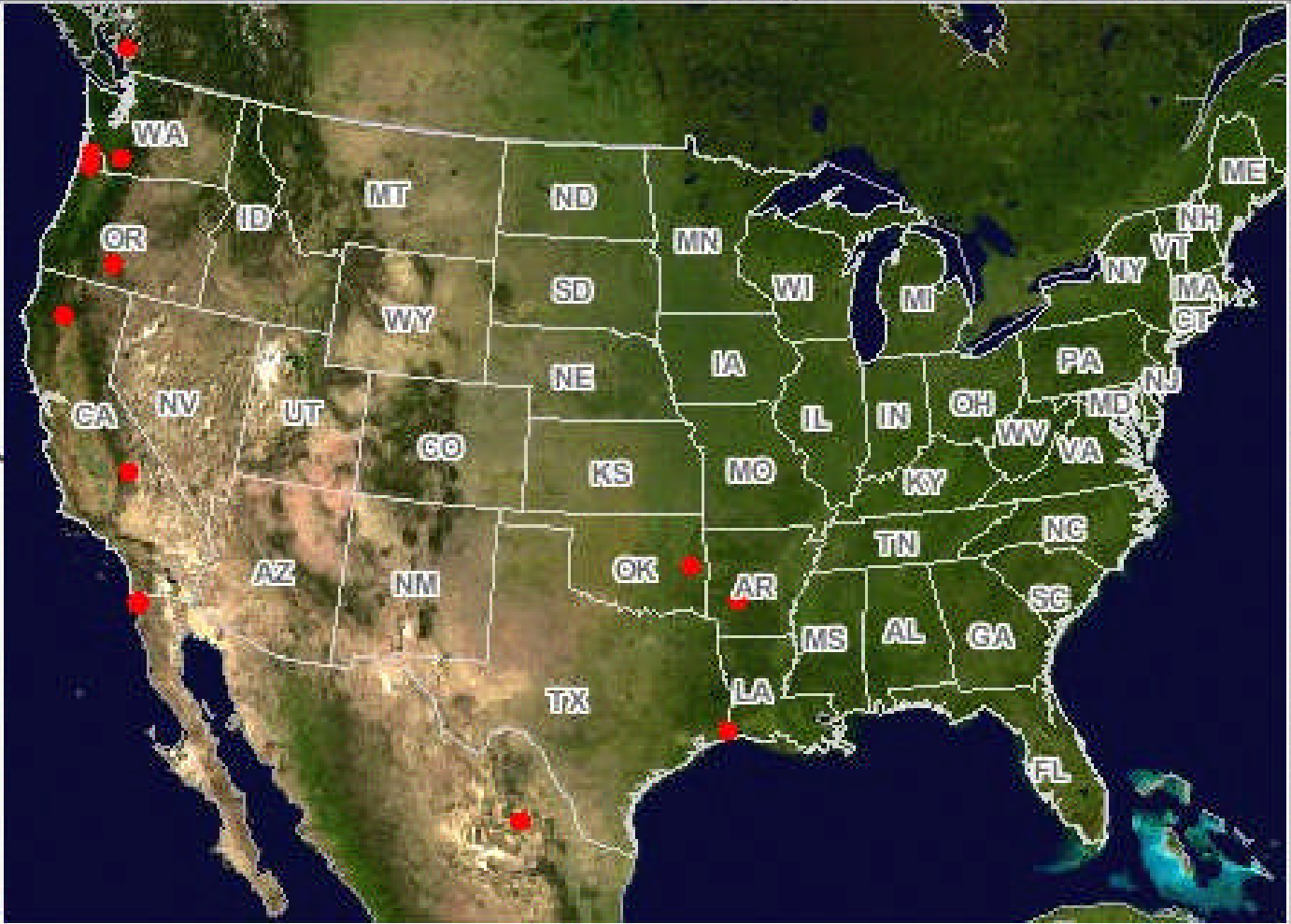
ArcExplorer-Java for Education File Edit View Tools Window Help

ArcExplorer-Java Edition for Education -- Window #1 - /ESRI/AEJEE/data/us_gn.axl



Layers

- ESRI_MODIS
- Fire Detections (La
- U.S. Cities
- U.S. Cities
- Major Cities
- Major Cities
- Major Cities
- Major Highways
- Major Highways
- Major Highways
- U.S. Counties
- U.S. Counties
- U.S. States
- U.S. States
- Non-U.S. Land
- Non-U.S. Land
- Satellite Imagery (
- Satellite Imagery (

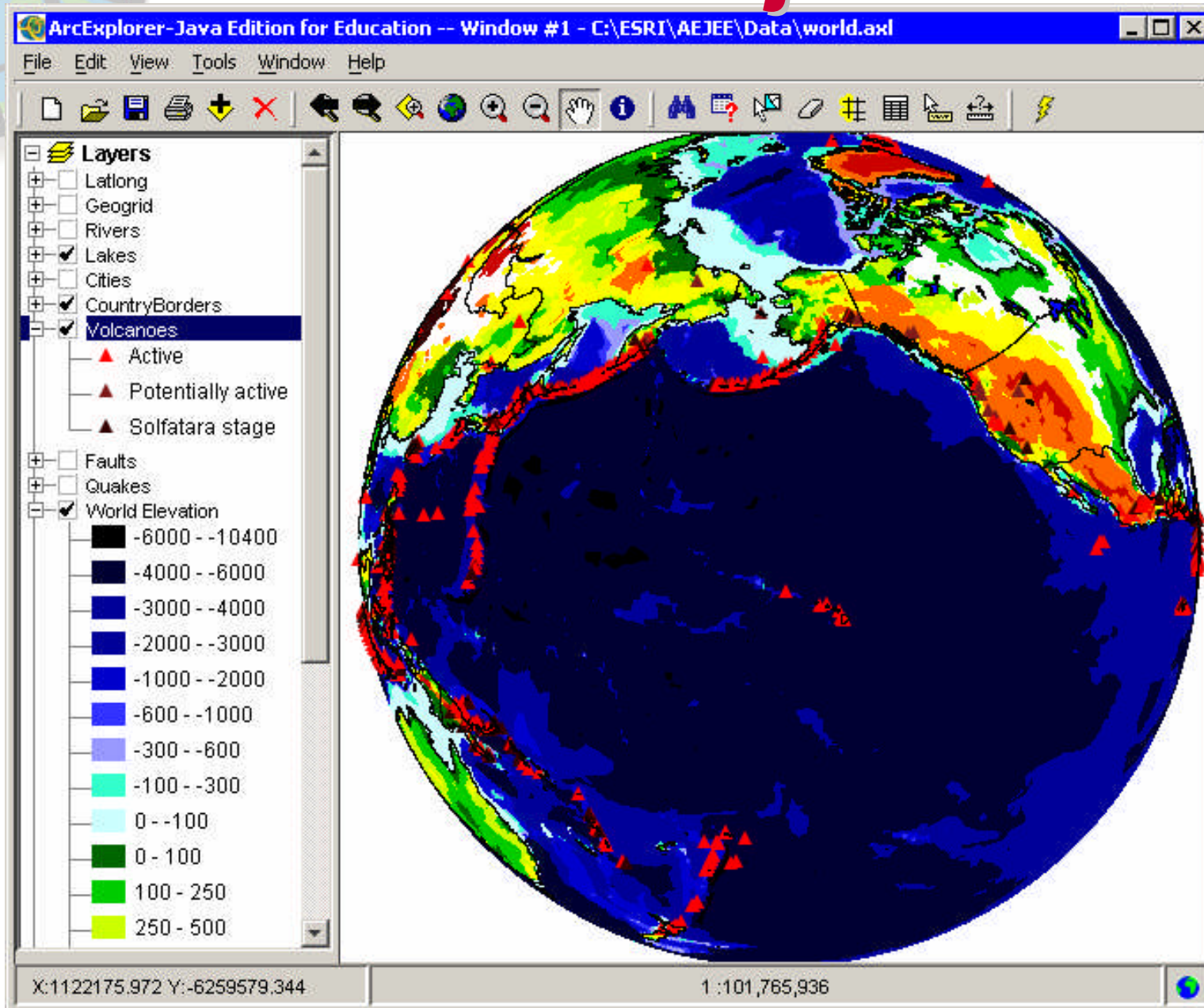


X:-1700967.016 Y:-14026...

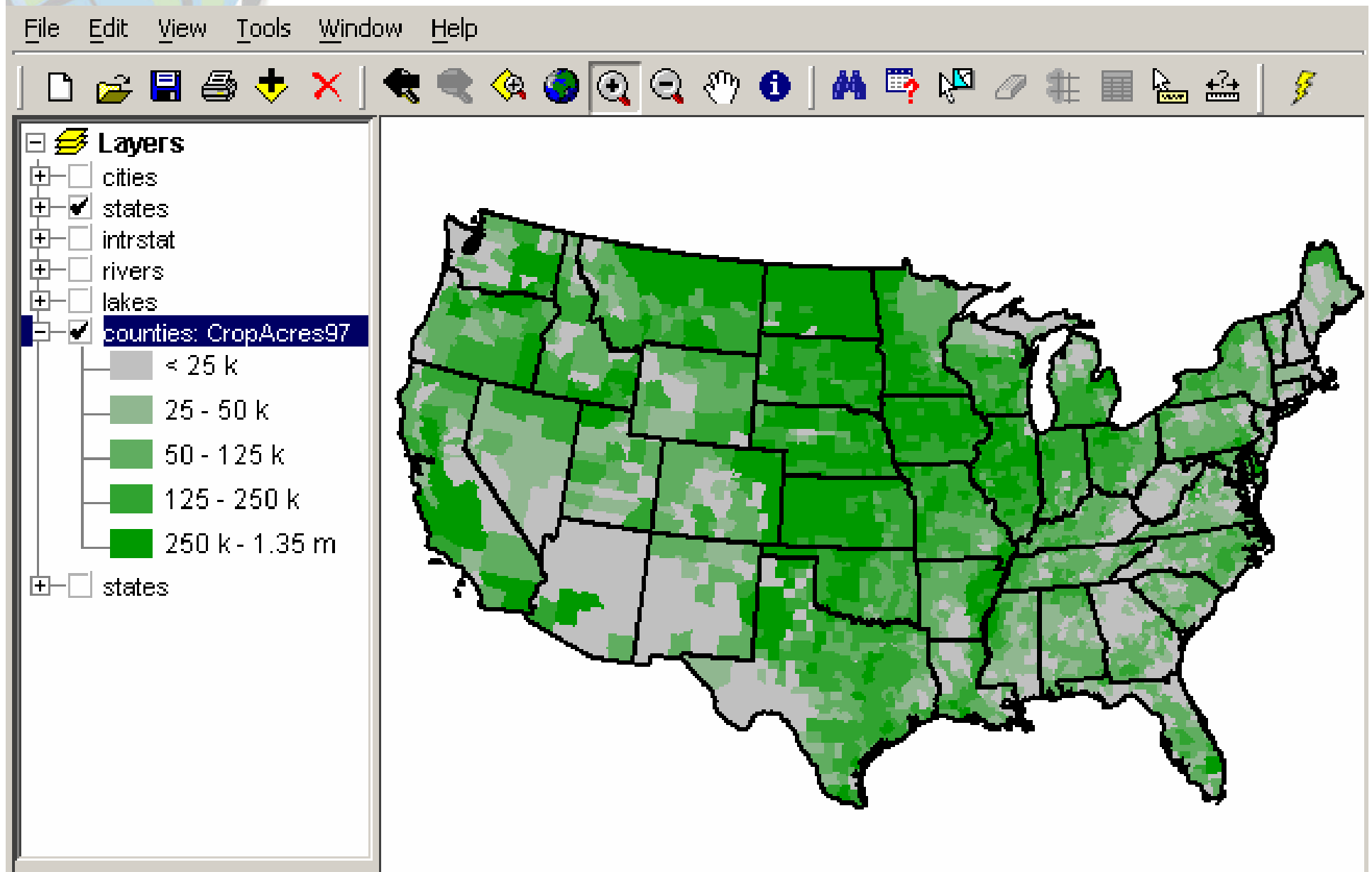
1 : 30,000,000



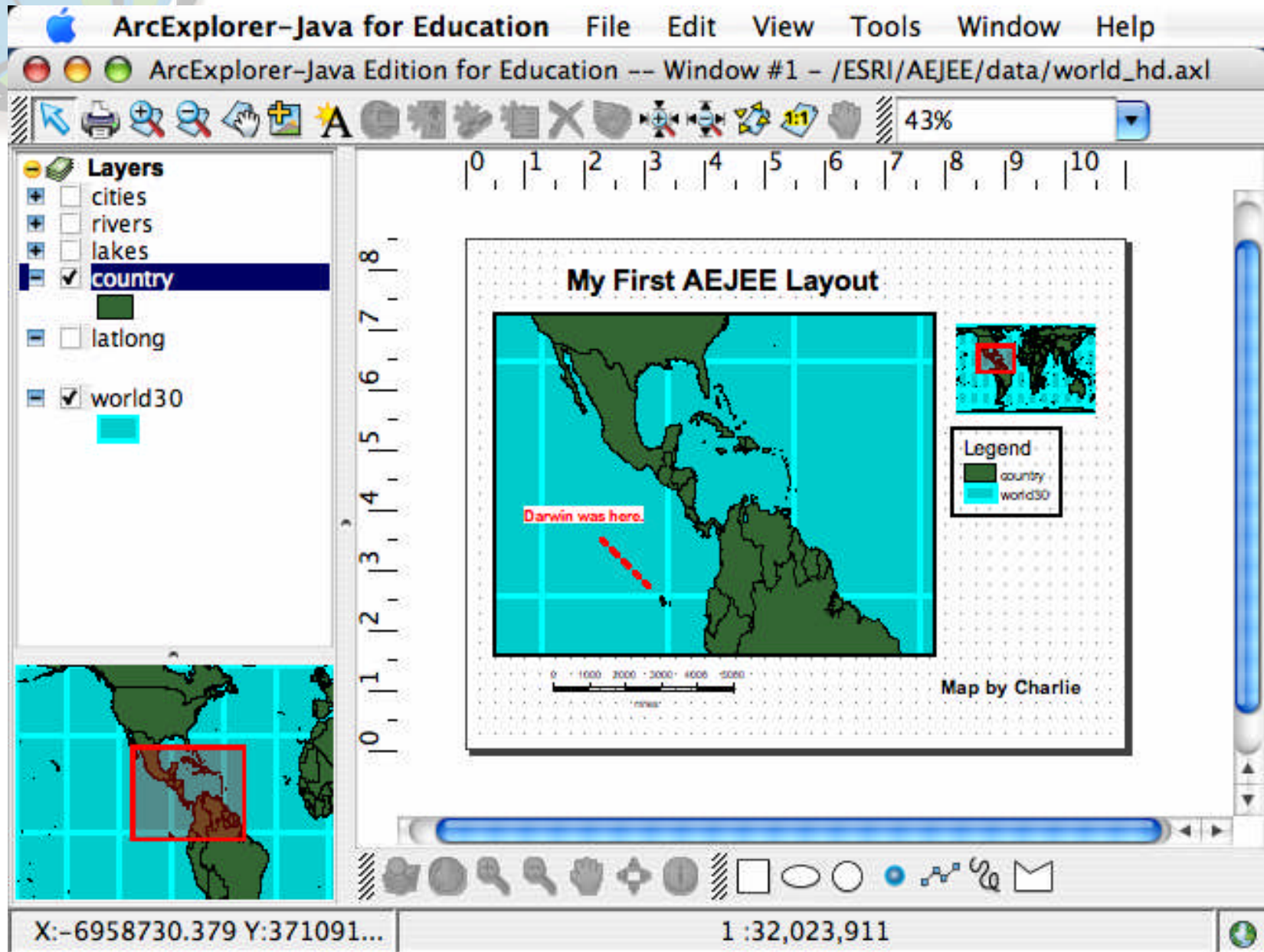
Customize Projections



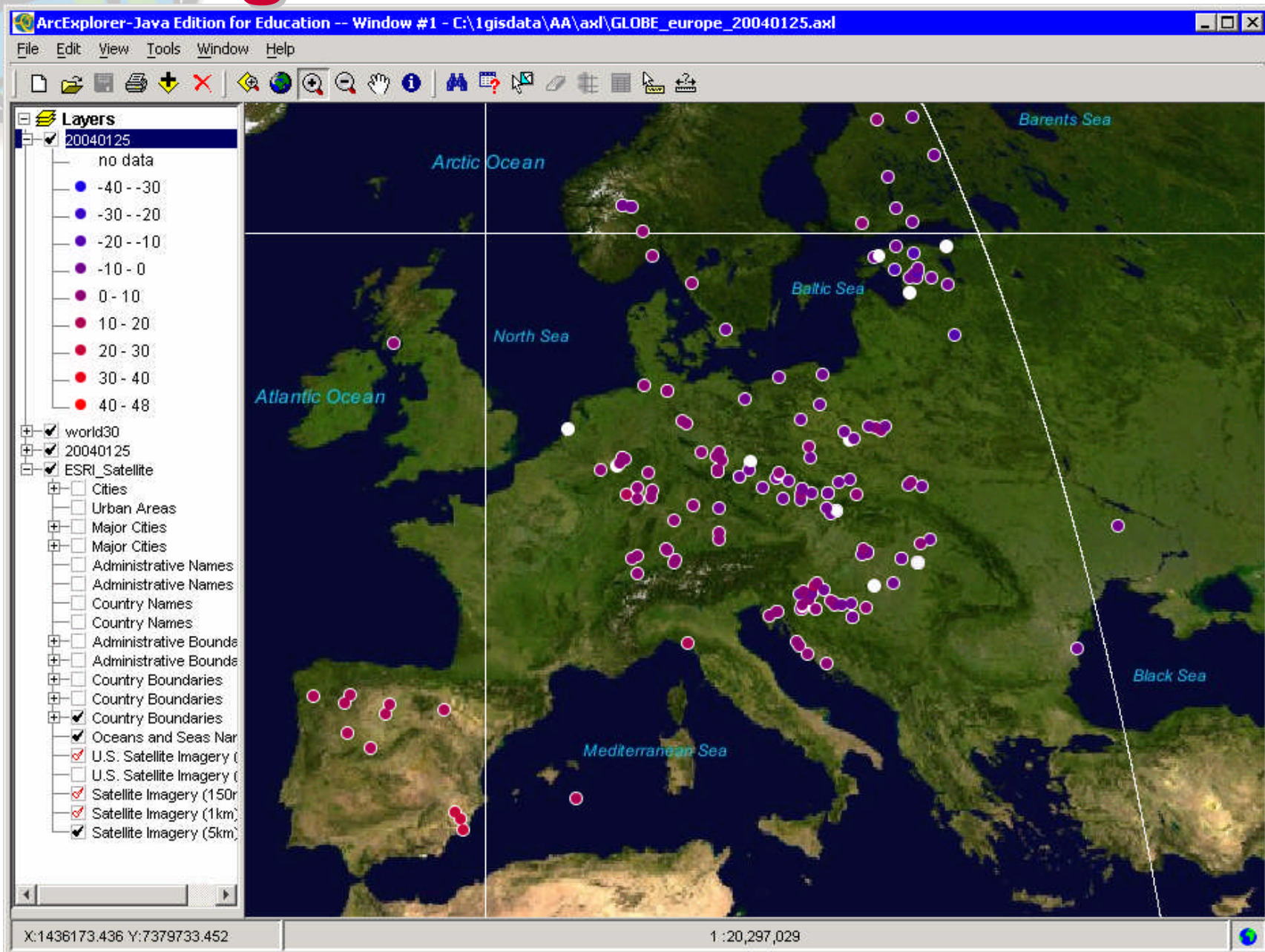
Classify & Symbolize



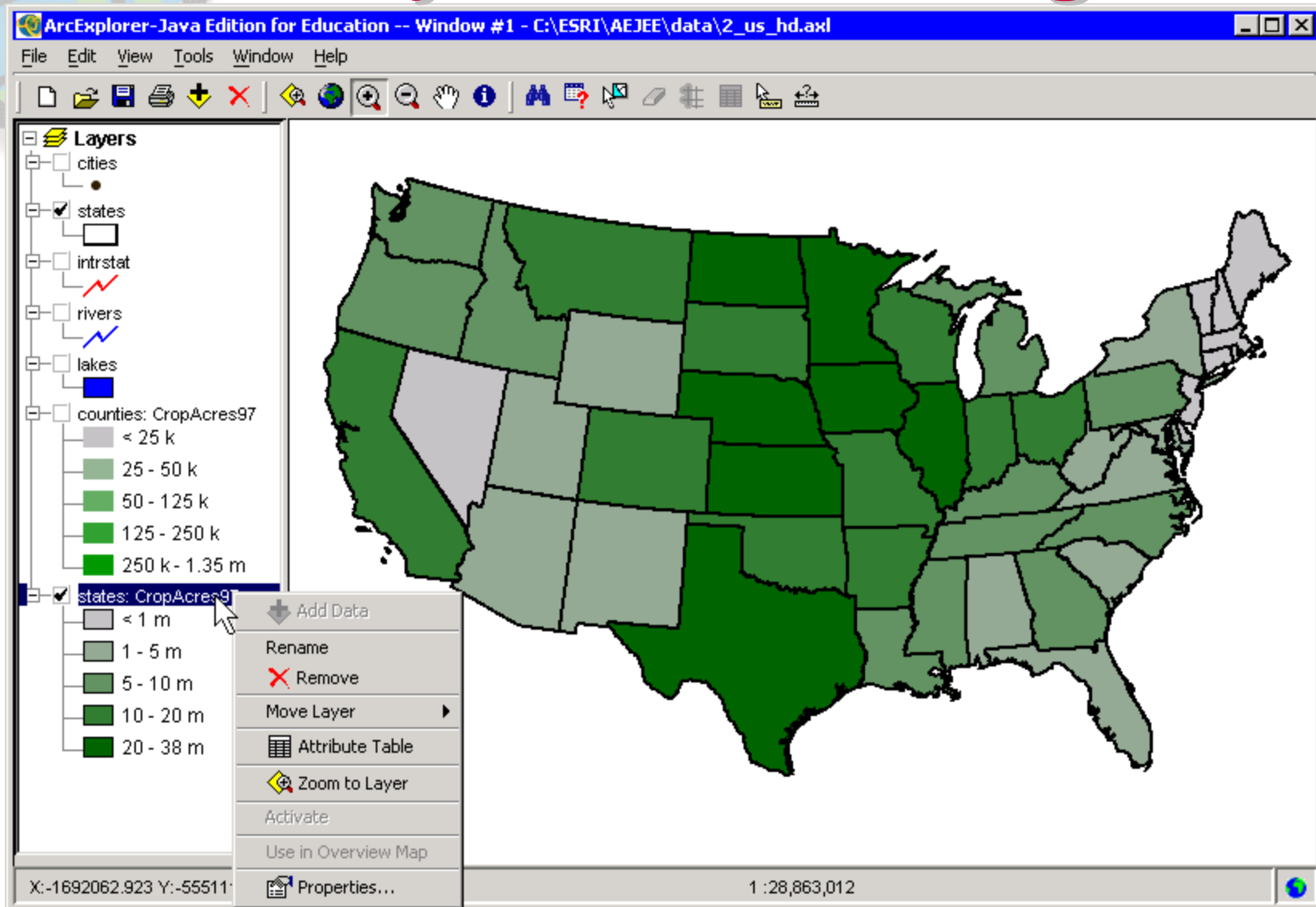
Custom Layouts



Integrate Online & HD Data



Classify – View Histogram



Classify – View Histogram

ArcExplorer-Java Edition for Education -- Window #1 - C:\ESRI\AEJEE\data\2_us_hd.axl

File Edit View Tools Window Help

states: CropAcres97 Properties

Symbols Labels General

Draw features using: Graduated Symbols

Field: CROP_ACR97

Classes: 5 Remove Outline Classified by: Equal Interval

Color: Start: Light Gray End: Custom

Symbol	Range	Label	Records
	-99 - 1000000	< 1 m	12
	1000000 - 5000000	1 - 5 m	11
	5000000 - 10000000	5 - 10 m	11
	10000000 - 20000000	10 - 20 m	10
	20000000 - 37662041	20 - 38 m	7

Field Stats:

Count	51
Max	3.766204E7
Min	-99.0
Mean	8453819.549019609
Std Dev	9097220.277740685
Total	4.31144797E8

OK Cancel Apply

Classify – View Histogram

The screenshot shows the ArcExplorer Java Edition for Education interface. The main window displays the 'states: CropAcres97 Properties' dialog box, which is currently set to 'Graduated Symbols'. The 'Class Breaks and Histogram' dialog box is open, showing a histogram of crop acres for the state of Massachusetts. The histogram has a peak around 1,000,000. The 'Class Breaks and Histogram' dialog box has the following settings:

- Select Break: 1000000
- Break: 1,000,000
- Next: 5000000
- Current: 1,000,000
- Prev: -99

The histogram shows the following data points:

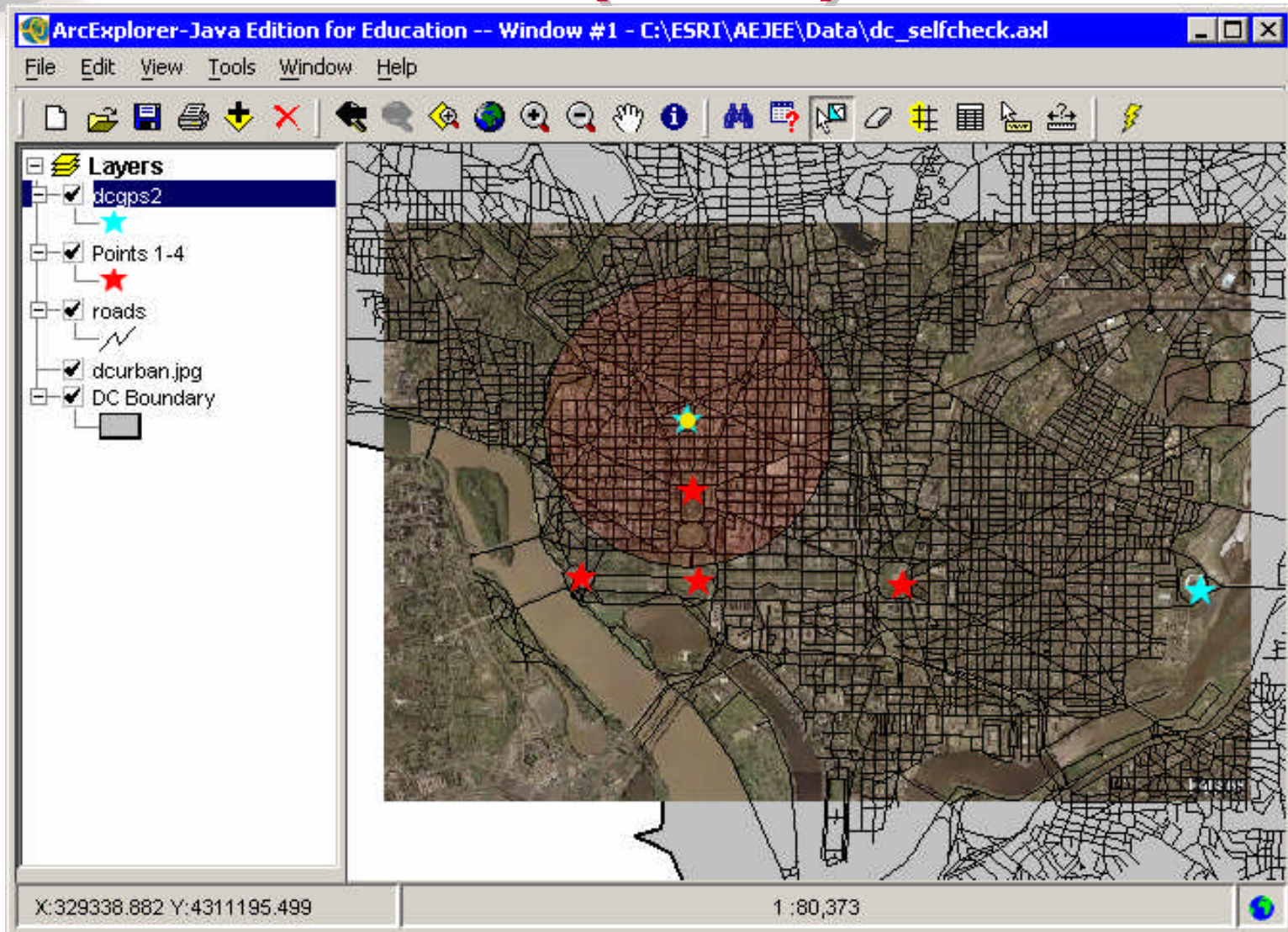
Value	Count
2000000	7 records
1000000	10 records
500000	11 records
100000	11 records

The background shows the 'states: CropAcres97 Properties' dialog box with the 'General' tab selected. The 'Layers' panel on the left shows the following layers:

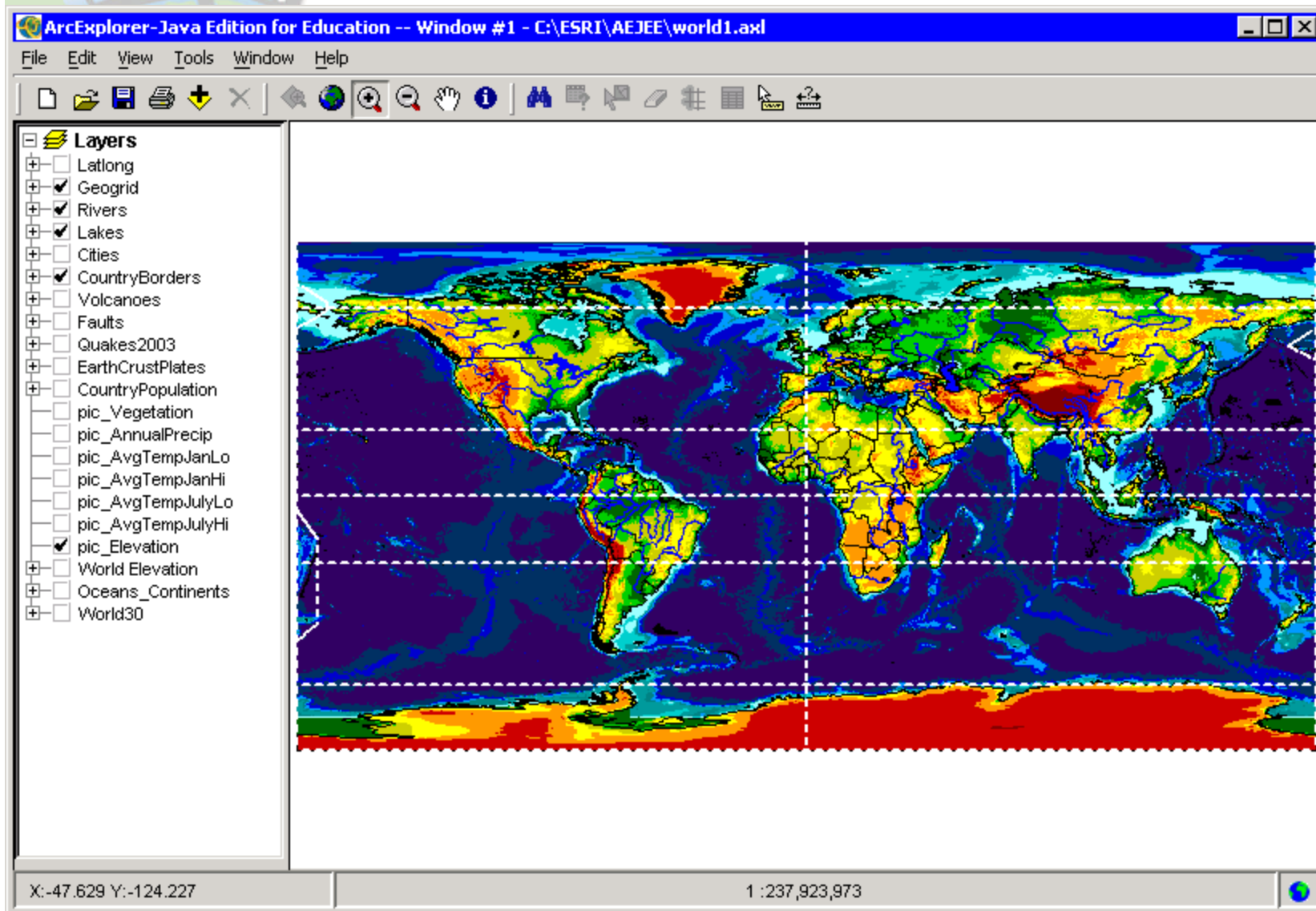
- cities
- states
- intrstat
- rivers
- lakes
- counties: CropAc
- states: CropAcres97

Create/Save/Open Projects

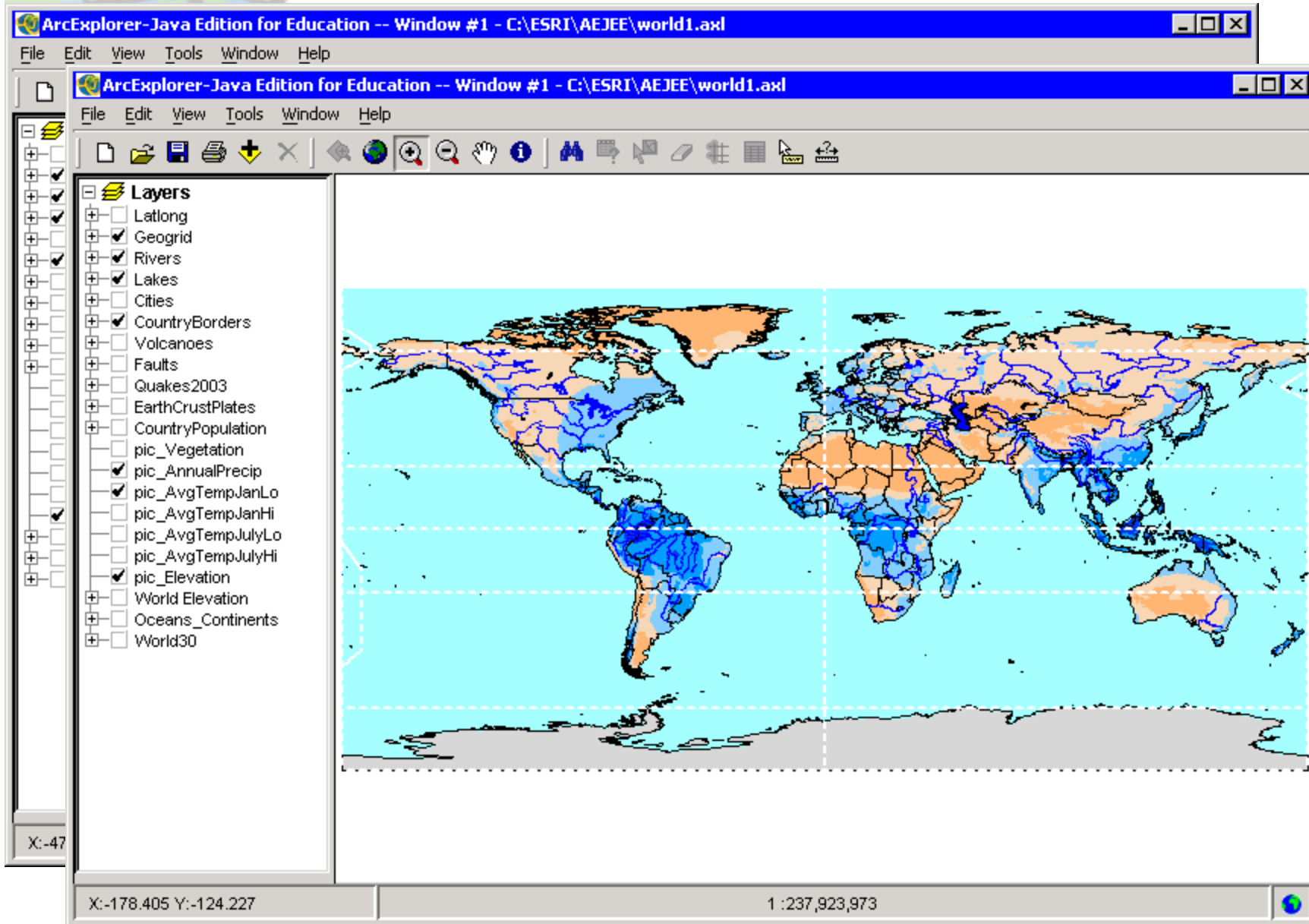
Add XY (GPS) Data



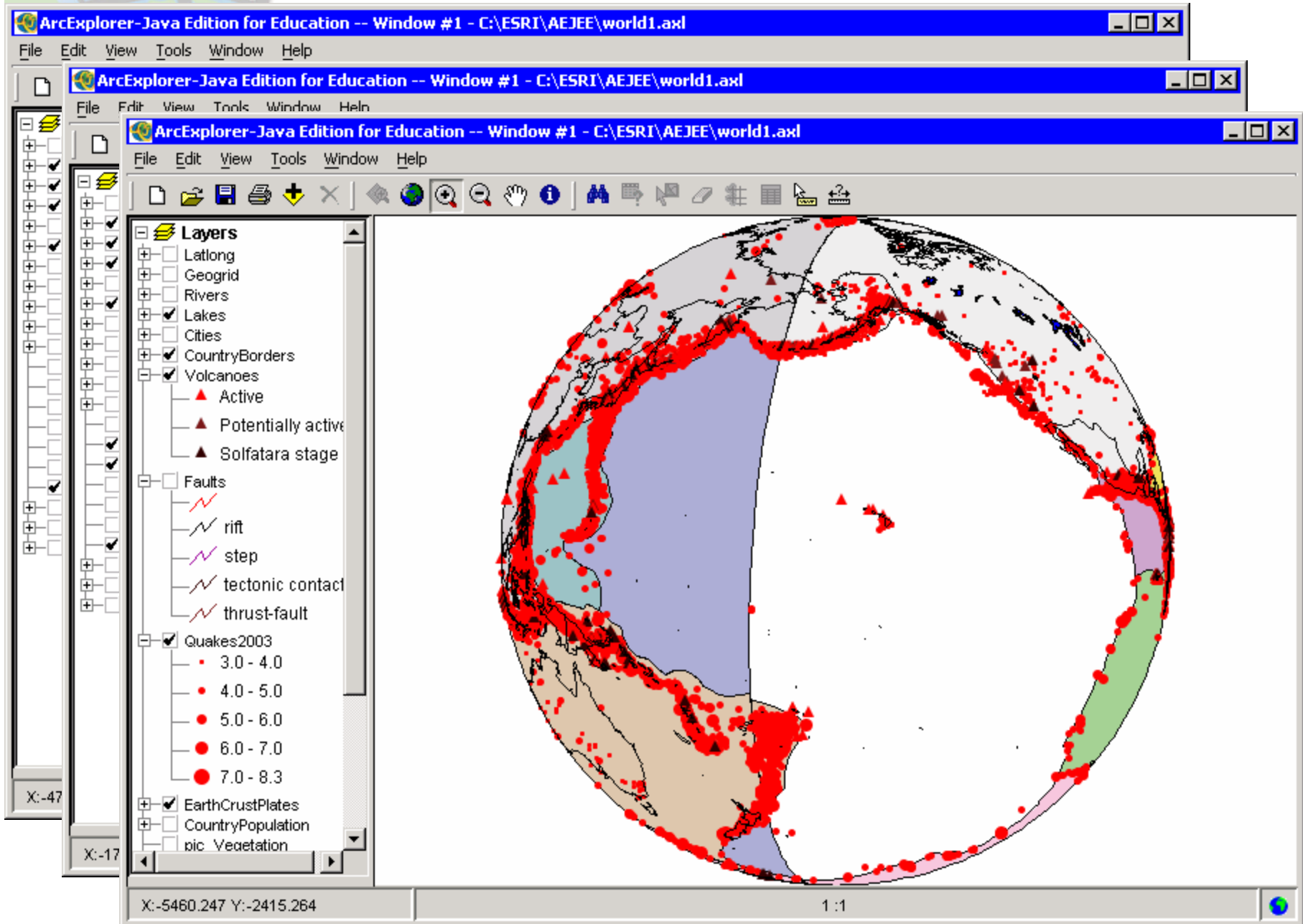
Released w/ starter data



Released w/ starter data



Released w/ starter data





Installing

- Direct from CD
- Download from Web (latest version!)
- Install into default location [HD:/ESRI] or choose location

ESRI
GIS Solutions for Education

ArcExplorer—Java Edition for Education

ArcExplorer—Java Edition for Education (AEJEE) is a free, downloadable, lightweight tool for exploring geographic data. AEJEE can be used on both Windows-based and Macintosh OS-X-based computers and can save and open projects, so work can be shared between users or between home and school. AEJEE can classify and symbolize shapefiles, integrate a wide array of image data, project on-the-fly shapefiles stored in decimal degrees, and use data distributed over the Internet from ArcIMS servers.

- Install AEJEE for Macintosh
- Install AEJEE for Windows
- Introductory AEJEE Lesson Package
- More AEJEE Lessons
- Check for AEJEE Updates

Windows Requirements
Pentium III or later processor; Windows 98SE, NT4SP6, 2000, XP, or later; 256 or more MB RAM; 100 or more MB hard drive space

Macintosh Requirements
G3 or later processor; Macintosh OS 10.2 or later; 256 or more MB RAM; 100 or more MB hard drive space

ArcExplorer 9 - Java Edition: Download with Instructions - Microsoft Internet Explorer

ESRI GIS and Mapping Software

ArcExplorer

ArcExplorer—Java Edition for Education: Download

The installation is self explanatory, requiring adherence to the click-through [license agreement](#). [PDF-193 KB, 11 pages]

Windows

- [Download ArcExplorer \(Java Edition for Education\) Windows \(aejee_windows.zip\)](#)
File Size: 63.4 MB

Macintosh

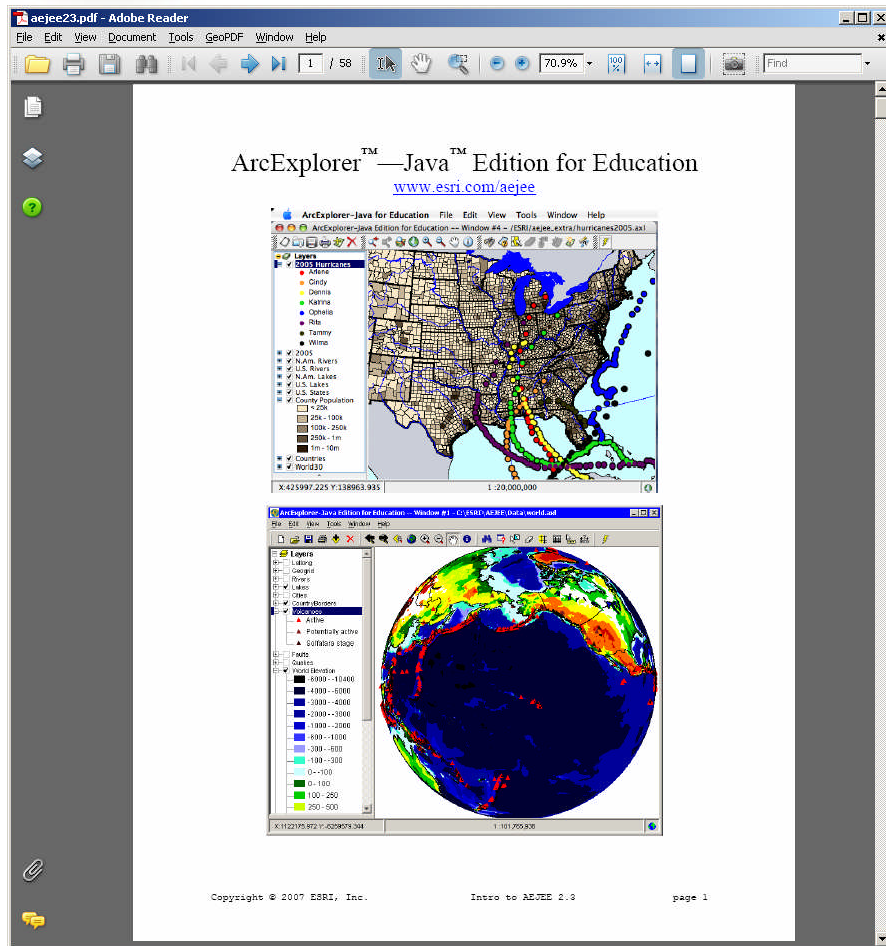
- [Download ArcExplorer \(Java Edition for Education\) Mac OSX \(aejee_mac.zip\)](#)
File Size: 48.0 MB

Home | Products | Services | Industries | Training | Support | Events | News | About ESRI

Contact Us | Store | Site Map | Privacy | Copyright © ESRI | Legal | Podcast Feeds | RSS News Feed | Careers
Last Updated: Thursday, June 29, 2006.



Built-in Tutorial



- [HD:/ESRI/AEJEE /DATA/LESSONS]
- 58 page PDF
- designed for ed audience
- intro-level instruction on capacities, usage, & GIS thinking



New in AEJEE 2.3

- **JRE 1.5**
 - **Relative paths for projects (SW/data can be installed in various locations)**
 - **Starting folder is “esri/aejee/data”**
 - **Identify tool uses “active layer”**
 - **Sort selected records to top of table**
 - **Improved layout operation**
 - **Help menu includes link to tutorial**
 - **Many “invisible” code improvements**



www.esri.com/aejee

Lessons are available at
www.esri.com/arclessons
(Click “By Software – ArcExplorer”)

General info: www.esri.com/schools